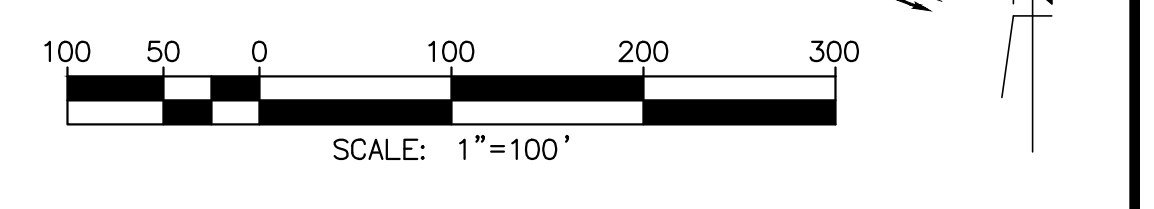
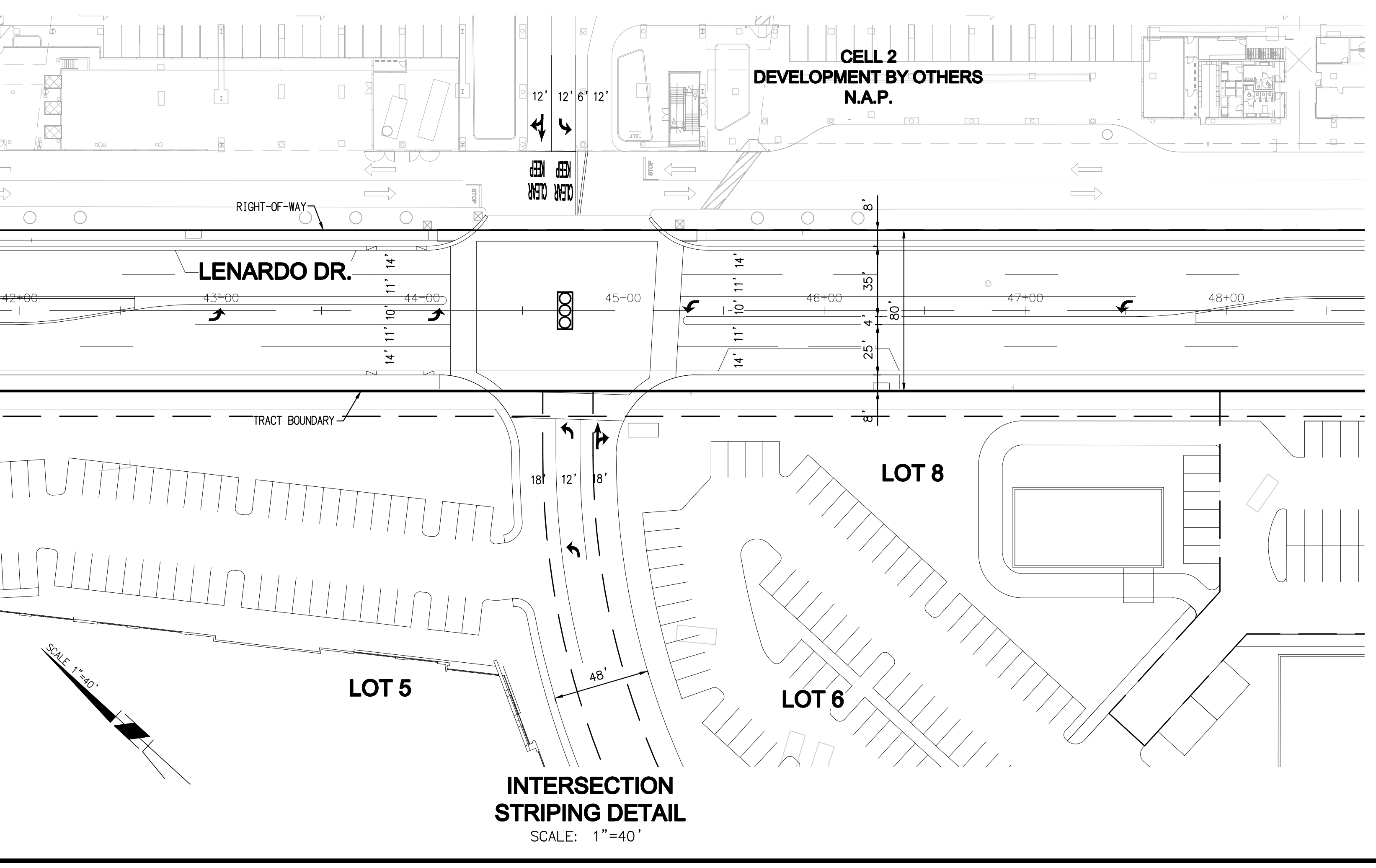
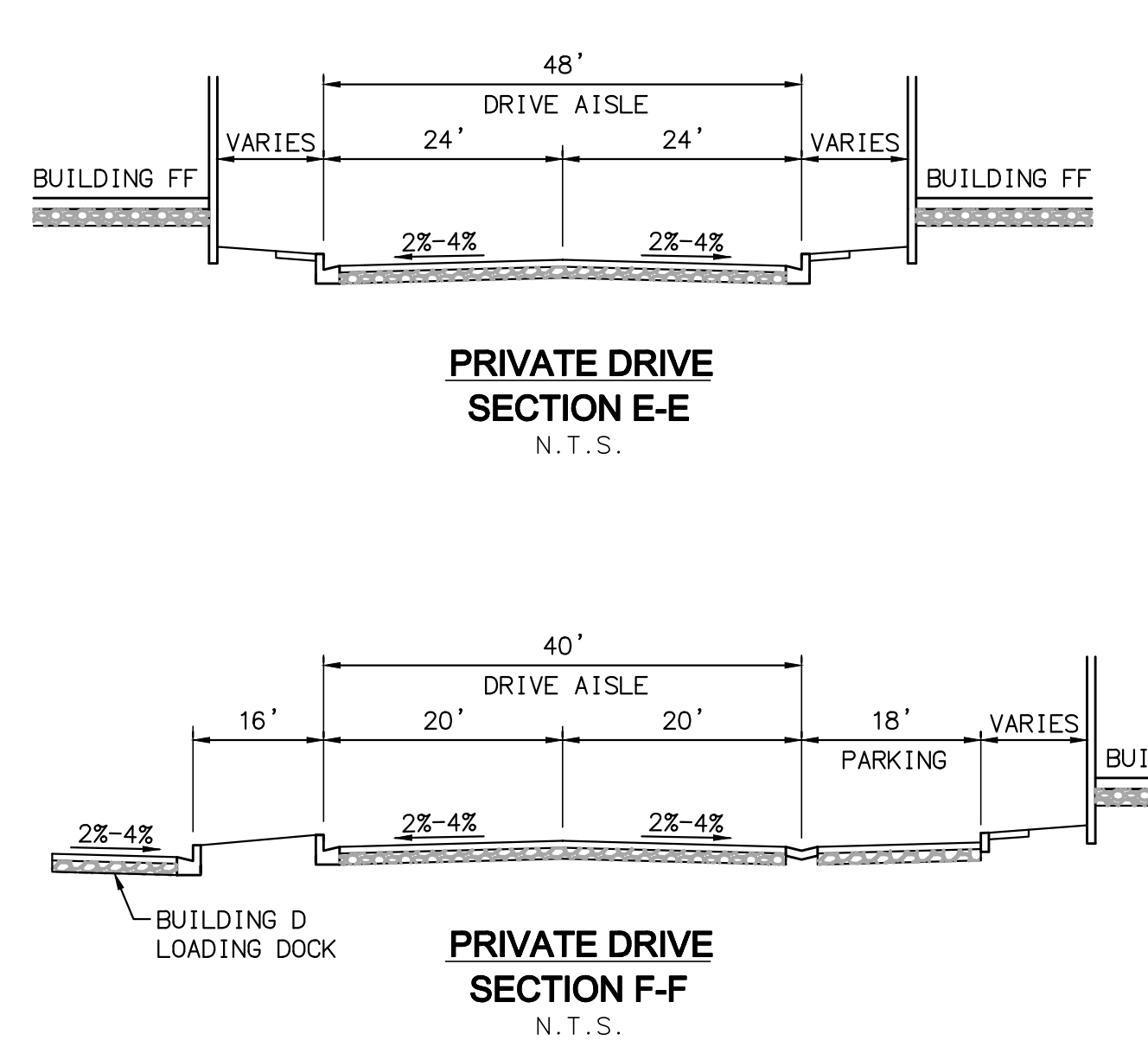
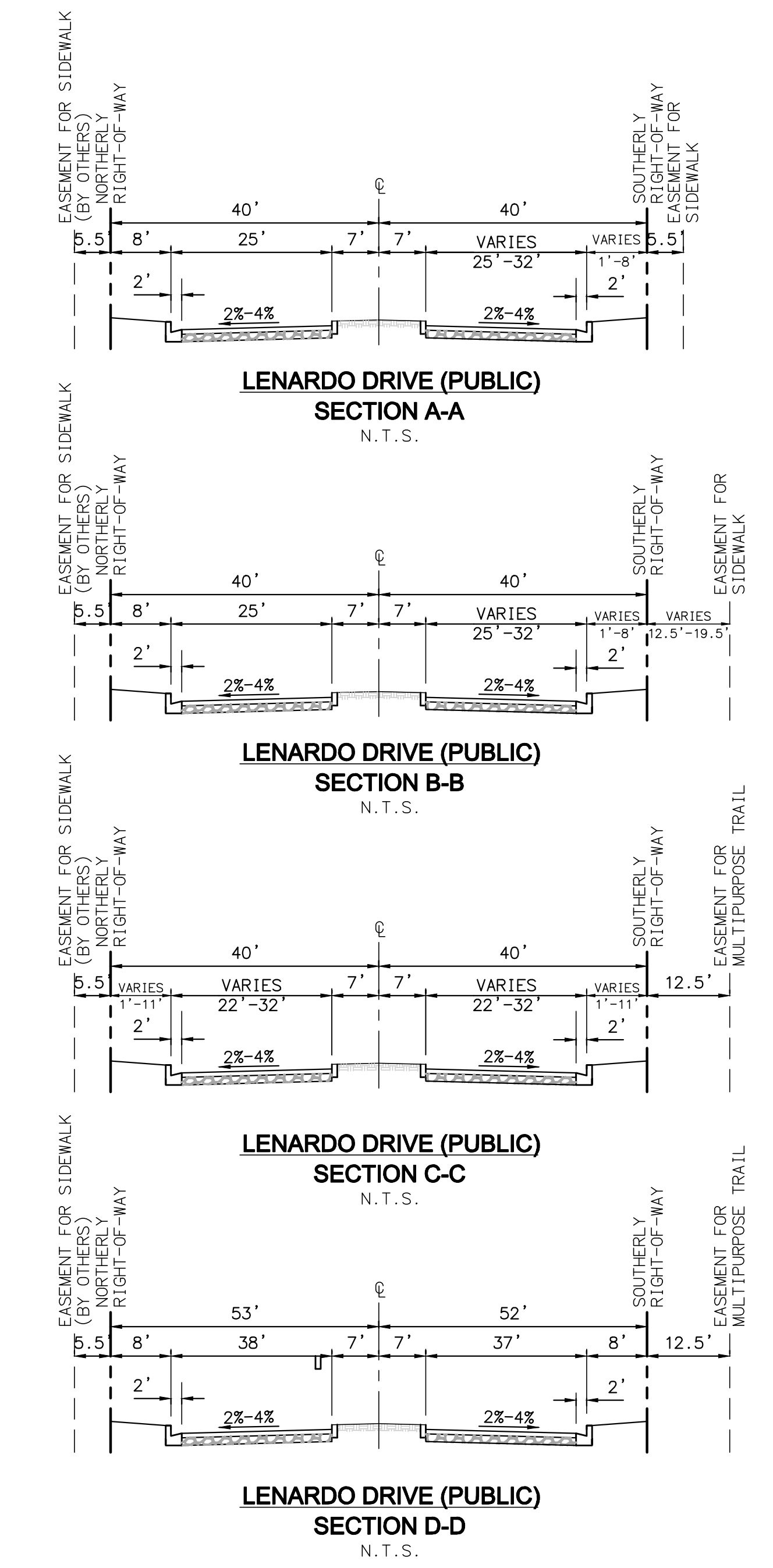
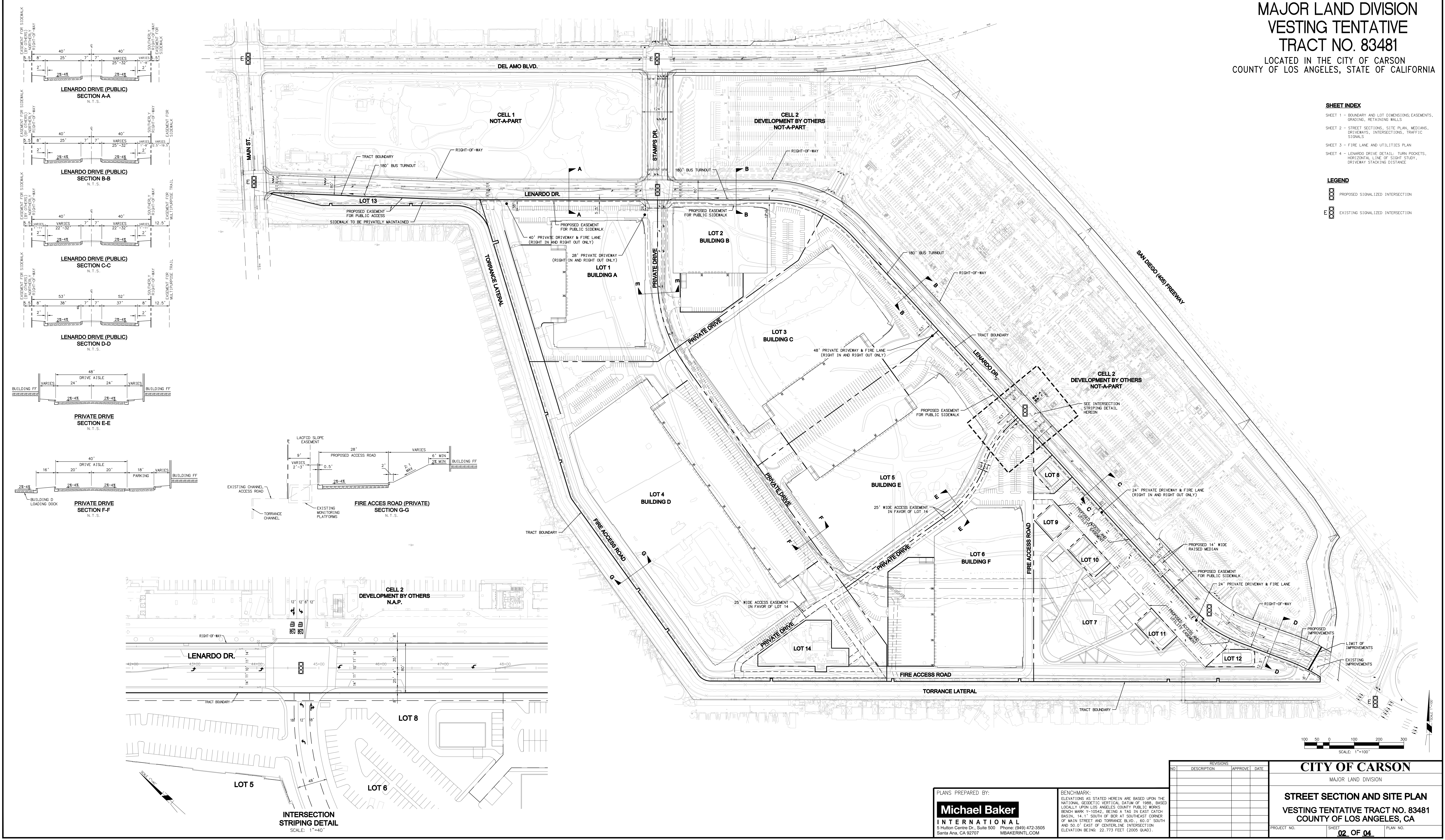


MAJOR LAND DIVISION
 VESTING TENTATIVE
 TRACT NO. 83481
 LOCATED IN THE CITY OF CARSON
 COUNTY OF LOS ANGELES, STATE OF CALIFORNIA

- SHEET INDEX**
- SHEET 1 - BOUNDARY AND LOT DIMENSIONS, EASEMENTS, GRADING, RETAINING WALLS
 - SHEET 2 - STREET SECTIONS, SITE PLAN, MEDIANS, DRIVEWAYS, INTERSECTIONS, TRAFFIC SIGNALS
 - SHEET 3 - FIRE LANE AND UTILITIES PLAN
 - SHEET 4 - LENARDO DRIVE DETAIL: TURN POCKETS, HORIZONTAL LINE OF SIGHT STUDY, DRIVEWAY STACKING DISTANCE

- LEGEND**
- PROPOSED SIGNALIZED INTERSECTION
 - EXISTING SIGNALIZED INTERSECTION



PLANS PREPARED BY:
Michael Baker INTERNATIONAL
 5 Hutton Centre Dr., Suite 500 Santa Ana, CA 92707 Phone: (949) 472-3505 MBAKERINTL.COM

BENCHMARK:
 ELEVATIONS AS STATED HEREIN ARE BASED UPON THE NATIONAL GEODETIC VERTICAL DATUM OF 1988, BASED LOCALLY UPON LOS ANGELES COUNTY PUBLIC WORKS BENCH MARK 1-10542, BEING A TAG IN EAST CATCH BASIN, 14.1' SOUTH OF BOX AT SOUTHEAST CORNER OF MAIN STREET AND TORRANCE BLVD., 60.0' SOUTH AND 50.0' EAST OF CENTERLINE INTERSECTION. ELEVATION BEING: 22.773 FEET (2005 QUAD).

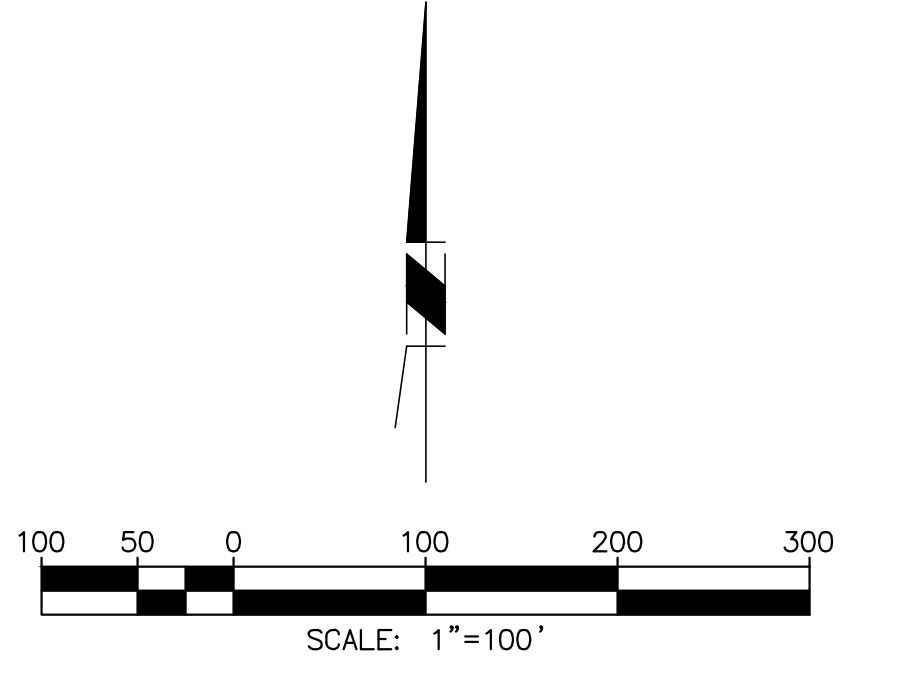
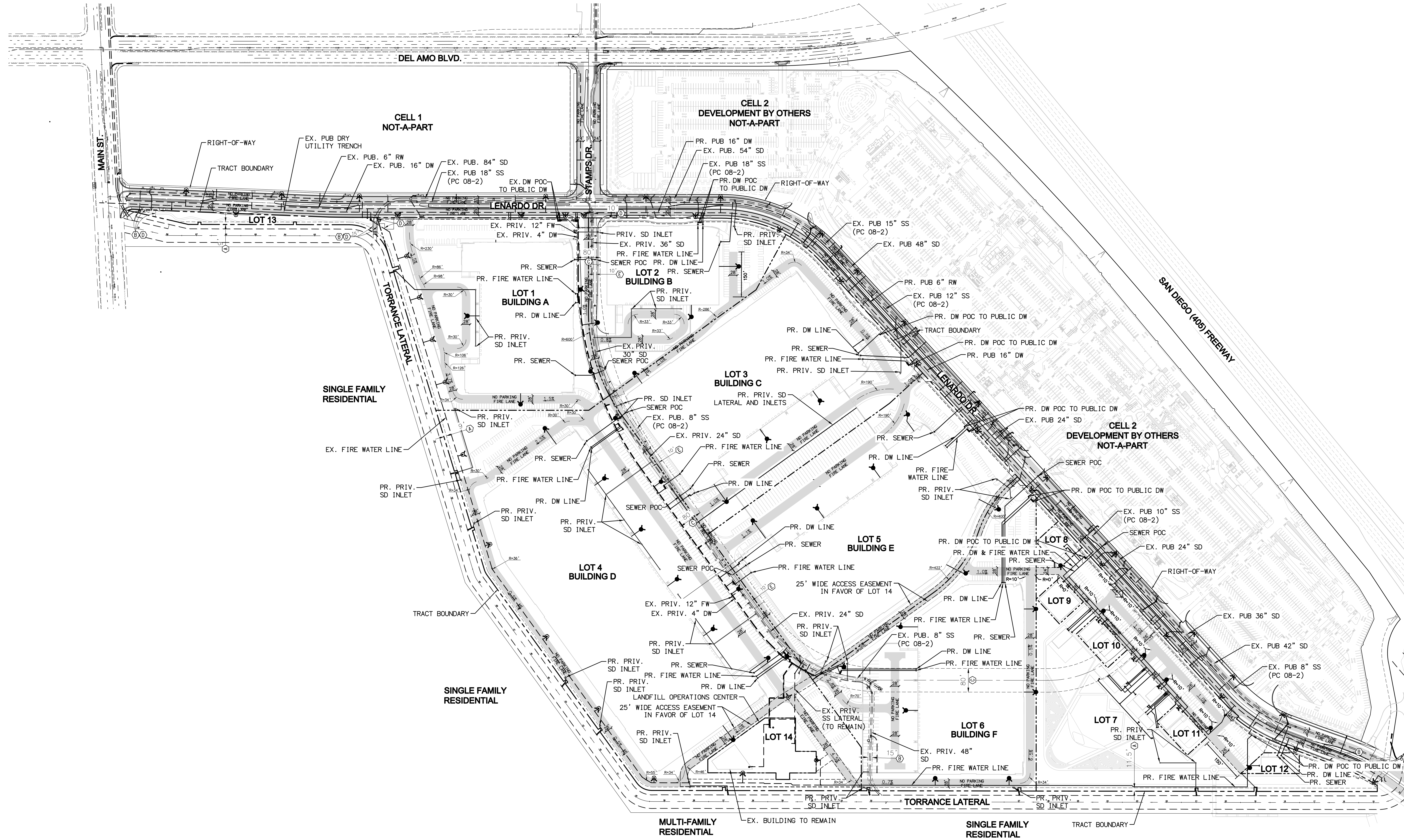
REVISIONS			
NO.	DESCRIPTION	APPROVE	DATE

CITY OF CARSON
 MAJOR LAND DIVISION
STREET SECTION AND SITE PLAN
 VESTING TENTATIVE TRACT NO. 83481
 COUNTY OF LOS ANGELES, CA

PROJECT NO. SHEET **02 OF 04** PLAN NO.

H:\pds\10103253\000\pds\10103253\10103253-01-02.dwg 02/16/22 7:46am 0400PFR

MAJOR LAND DIVISION
 VESTING TENTATIVE
 TRACT NO. 83481
 LOCATED IN THE CITY OF CARSON
 COUNTY OF LOS ANGELES, STATE OF CALIFORNIA



NOTE:
 SEE SHEET 1 FOR LEGAL DESCRIPTION, LOT DATA,
 VICINITY MAP, EASEMENT NOTES & GENERAL NOTES.

SHEET INDEX
 SHEET 1 - BOUNDARY AND LOT DIMENSIONS; EASEMENTS,
 GRADING, RETAINING WALLS
 SHEET 2 - STREET SECTIONS, SITE PLAN, MEDIANS,
 DRIVEWAYS, INTERSECTIONS, TRAFFIC
 SIGNALS
 SHEET 3 - FIRE LANES AND UTILITIES
 SHEET 4 - LENARDO DRIVE DETAIL: TURN POCKETS,
 HORIZONTAL LINE OF SIGHT STUDY,
 DRIVEWAY STACKING DISTANCES

UTILITY MAINTENANCE RESPONSIBILITY
 PUBLIC STORM DRAIN - LA COUNTY
 PUBLIC SEWER - LA COUNTY
 PUBLIC WATER - CALIFORNIA WATER
 SERVICE COMPANY
 PRIVATE SEWER - DEVELOPMENT ASSOCIATION
 PRIVATE WATER - DEVELOPMENT ASSOCIATION

LEGEND
 FIRELANE DIMENSIONS - 26' WIDE,
 18' INSIDE, & 45' OUTSIDE MIN.
 UNLESS OTHERWISE NOTED

- LOT LINES
- PROPOSED WATER LINES
- PROPOSED FIRE WATER LINES
- PROPOSED FIRE HYDRANT
- PROPOSED STORM DRAIN
- PROPOSED SEWER LINES
- PROPOSED RECLAIMED WATER
- EXISTING WATER LINES
- EXISTING FIRE WATER LINES
- EXISTING FIRE HYDRANTS
- EXISTING STORM DRAIN
- EXISTING SEWER LINES
- EXISTING RECLAIMED WATER

PLANS PREPARED BY:
Michael Baker
 INTERNATIONAL
 5 Hutton Centre Dr., Suite 500 Phone: (949) 472-3505
 Santa Ana, CA 92707 MBIKERINTL.COM

BENCHMARK:
 ELEVATIONS AS STATED HEREIN ARE BASED UPON THE
 NATIONAL GEODETIC VERTICAL DATUM OF 1988, BASED
 LOCALLY UPON LOS ANGELES COUNTY PUBLIC WORKS
 BENCHMARK Y-10542, BEING A TAG IN EAST CATCH
 BASIN, 14.1' SOUTH OF BOX AT SOUTHEAST CORNER
 OF MAIN STREET AND TORRANCE BLVD., 60.0' SOUTH
 AND 50.0' EAST OF CENTERLINE INTERSECTION
 ELEVATION BEING 22.773 FEET (2005 QUAD).

REVISIONS			
NO.	DESCRIPTION	APPROVE	DATE

CITY OF CARSON
 MAJOR LAND DIVISION
FIRE LANES AND UTILITY PLAN
 VESTING TENTATIVE TRACT NO. 83481
 COUNTY OF LOS ANGELES, CA

PROJECT NO. SHEET **03 OF 04** PLAN NO.

H:\pds\10103253\000\Drawings\10103253-03.dwg 02/01/22 - 1:21pm TMS

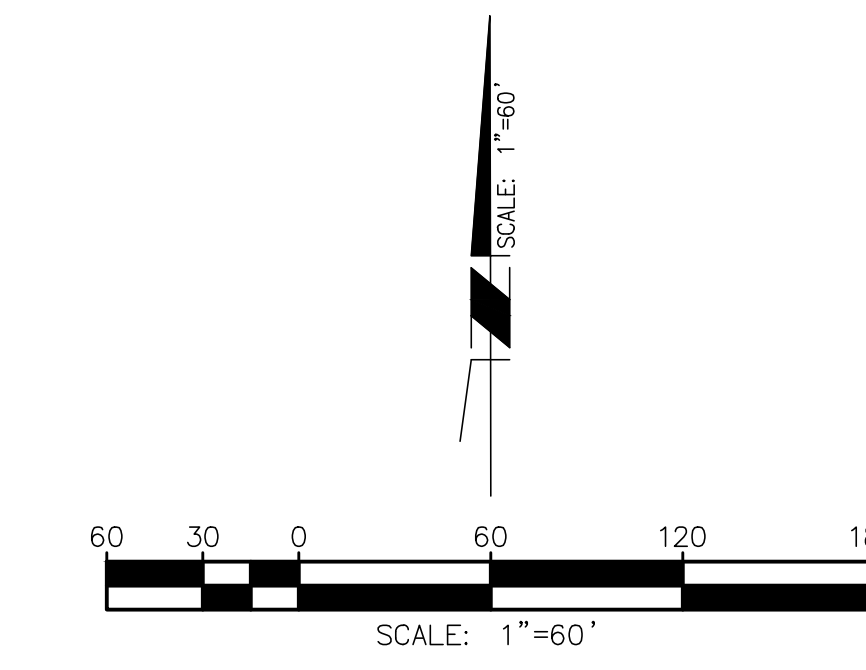
TRACT NO. 42385
BK. 1056/84-88

MAJOR LAND DIVISION
VESTING TENTATIVE
TRACT NO. 83481
LOCATED IN THE CITY OF CARSON
COUNTY OF LOS ANGELES, STATE OF CALIFORNIA

DEL AMO BOULEVARD

CELL 1
NOT-A-PART

CELL 2
DEVELOPMENT BY OTHERS
NOT-A-PART



NOTE:
SEE SHEET 1 FOR LEGAL DESCRIPTION, LOT DATA,
VICINITY MAP, EASEMENT NOTES & GENERAL NOTES.

SHEET INDEX
SHEET 1 - BOUNDARY AND LOT DIMENSIONS; EASEMENTS,
GRADINGS, RETAINING WALLS
SHEET 2 - STREET SECTIONS, SITE PLAN, MEDIANS,
DRIVEWAYS, INTERSECTIONS, CENTERLINE
DATA
SHEET 3 - FIRE LANE AND UTILITIES PLAN
SHEET 4 - LENARDO DRIVE DETAIL: TURN POCKETS,
HORIZONTAL LINE OF SIGHT STUDY,
DRIVEWAY STACKING DISTANCE

LEGEND
— SIGHT DISTANCE L=365' LENARDO DRIVE
— SIGHT DISTANCE L=465' DEL AMO BLVD

MAIN STREET

LOT 13

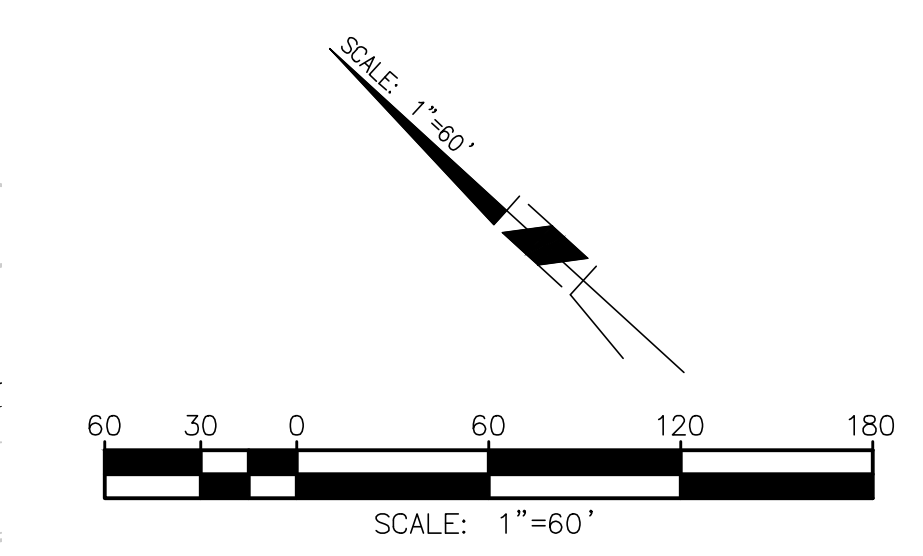
LENARDO DRIVE

LOT 1
BUILDING A

LOT 2
BUILDING B

MATCHLINE
SEE LOWER LEFT

CELL 2
DEVELOPMENT BY OTHERS
NOT-A-PART



MATCHLINE
SEE UPPER RIGHT

LENARDO DRIVE

LOT 3
BUILDING C

LOT 5
BUILDING E

LOT 8

LOT 9

LOT 10

LOT 11

LOT 12

TORRANCE LATERAL

PLANS PREPARED BY:
Michael Baker
INTERNATIONAL
5 Hutton Centre Dr., Suite 500 Phone: (949) 472-3505
Santa Ana, CA 92707 MBAKERINTL.COM

BENCHMARK:
ELEVATIONS AS STATED HEREIN ARE BASED UPON THE
NATIONAL GEODETIC VERTICAL DATUM OF 1988; BASED
LOCALLY UPON LOS ANGELES COUNTY PUBLIC WORKS
BENCH MARK Y-10542, BEING A TAG IN EAST CATCH
BASIN, 14.1' SOUTH OF BOP AT SOUTHEAST CORNER
OF MAIN STREET AND TORRANCE BLVD., 60.0' SOUTH
AND 50.0' EAST OF CENTERLINE INTERSECTION
ELEVATION BEING: 22.773 FEET (2005 QUAD).

REVISIONS			
NO.	DESCRIPTION	APPROVE	DATE

CITY OF CARSON		
MAJOR LAND DIVISION		
LENARDO DRIVE DETAIL		
VESTING TENTATIVE TRACT NO. 83481 COUNTY OF LOS ANGELES, CA		
PROJECT NO.	SHEET 04 OF 04	PLAN NO.

H:\pds\10103753\000\Map\Len10103753\Map\Len10103753-04.dwg 02/01/22 - 1:23pm TMS